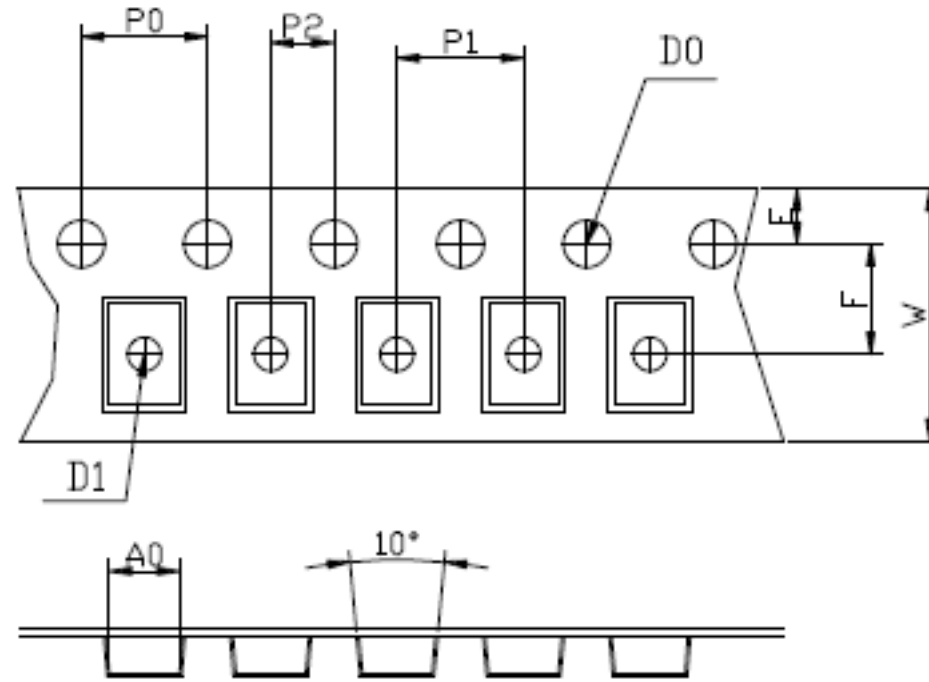


THE DIMENSIONS SHOWN ON THIS DESIGNED DRAWING ARE FOR ILLUSTRATIVE PURPOSE
 DIMENSIONS FOR ACTUAL CARRIER TAPE MAY SLIGHTLY DIFFERENT

REV.	MODIFICATION	DATE	DRAWING	CHECKED	APPROVED
1					
2					



Not Marked tolerance $\pm 0.2\text{mm}$

D_0 $\text{\textcircled{E}}$	D_1 $\text{\textcircled{E}}$	P_0 $\text{\textcircled{A}}$	P_2 $\text{\textcircled{A}}$	E $\text{\textcircled{A}}$						
1.55 ± 0.05	below 1.20	4.00 ± 0.10	2.00 ± 0.05	1.75 ± 0.10						
ITEM	W $\text{\textcircled{E}}$	A_0 $\text{\textcircled{A}}$	A_1 $\text{\textcircled{A}}$	B_0 $\text{\textcircled{A}}$	B_1 $\text{\textcircled{A}}$	K_0 $\text{\textcircled{C}}$	K_1 $\text{\textcircled{C}}$	P_1 $\text{\textcircled{A}}$	F $\text{\textcircled{A}}$	T $\text{\textcircled{E}}$
DIM	8.00 ± 0.10	2.70 ± 0.10	± 0.10	3.45 ± 0.10	± 0.10	1.80 ± 0.10	± 0.10	4.00 ± 0.10	3.50 ± 0.05	0.22 ± 0.05
ALTERNATE										

- The Maximum cumulative tolerance is $\pm 0.2\text{mm}$ for 10 sprocket hole pitch
- Cambers do not exceed 1.0mm in 250mm length
- All dimension follow EIA-481-D series definition
- Material: PC+S black conductive
- One 22" Reel=800 Meters

RoHS Compliance	NAME.	CARRIER TAPE	Part Number	1210-03	SIZE	A4	DSGD		DIM TOL	Ang Tol	
	Mold Ref	2.70*3.45*1.80	Customer P/N		SHEET	1/1	PROJ		X ± 0.30	X.XX ± 0.10	X $\pm 5'$
	MATERIAL	PC+S black conductive	SCALE	1:1	REV	A/0	CHKD		X.X ± 0.20	X.XX ± 0.05	.XX $\pm 3'$
			UNIT	MM	DATE		APPD				

