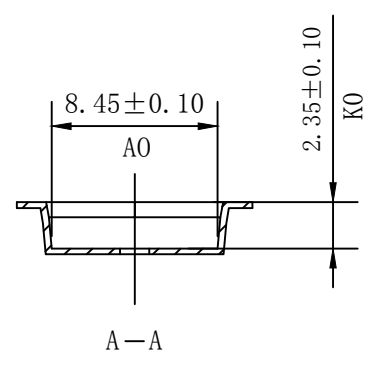
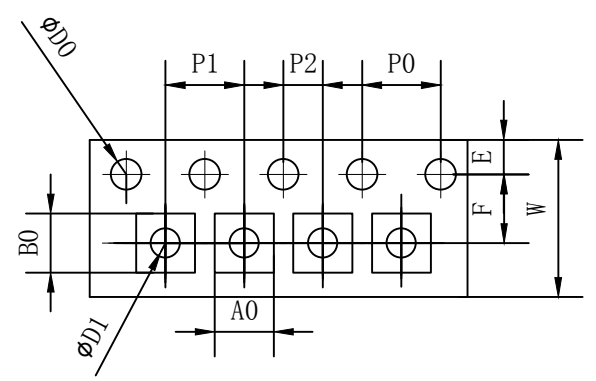
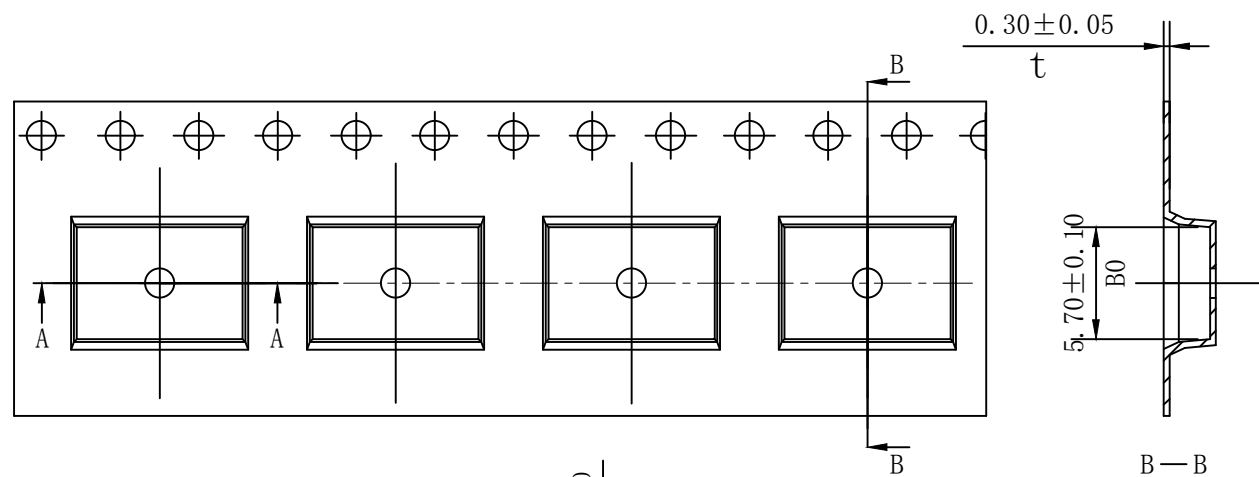


THE DIMENSIONS SHOWN ON THIS DESIGNED DRAWING ARE FOR ILLUSTRATIVE PURPOSE
 DIMENSIONS FOR ACTUAL CARRIER TAPE MAY SLIGHTLY DIFFERENT

REV	MODIFICATION	DATE	DRAWING	CHECKED	APPROVED
1					
2					



Not Marked tolerance $\pm 0.2\text{mm}$

D_0 $\text{\textcircled{E}}$	D_1 $\text{\textcircled{E}}$	P_0 $\text{\textcircled{A}}$	P_2 $\text{\textcircled{A}}$	E $\text{\textcircled{A}}$						
1.50 $\begin{matrix} +0.10 \\ -0.00 \end{matrix}$	1.50 $\begin{matrix} +0.10 \\ -0.00 \end{matrix}$	4.00 ± 0.10	2.00 ± 0.10	1.75 ± 0.10						
ITEM	W $\text{\textcircled{E}}$	A_0 $\text{\textcircled{A}}$	A_1 $\text{\textcircled{A}}$	B_0 $\text{\textcircled{A}}$	B_1 $\text{\textcircled{A}}$	K_0 $\text{\textcircled{C}}$	K_1 $\text{\textcircled{C}}$	P_1 $\text{\textcircled{A}}$	F $\text{\textcircled{A}}$	T $\text{\textcircled{E}}$
DIM	16.00 ± 0.30	8.45 ± 0.10	± 0.10	5.70 ± 0.10	± 0.10	2.35 ± 0.10	± 0.10	12.00 ± 0.10	7.50 ± 0.10	0.30 ± 0.05
ALTERNATE										

- The Maximum cumulative tolerance is $\pm 0.2\text{mm}$ for 10 sprocket hole pitch
- Cambers do not exceed 1.0mm in 250mm length
- All dimension follow EIA-481-D series definition
- Material: PS black
- One 22" Reel=85 Meters

RoHS Compliance	NAME.	CARRIER TAPE	Part Number	SOP8(208)	SIZE	A4	DSGD		DIM TOL	Ang Tol
	Mold Ref	8.45*5.70*2.35	Customer P/N		SHEET	1/1	PROJ		X ± 0.30	X.XX ± 0.10
	MATERIAL	PS BLACK	SCALE	1:1	REV	A/0	CHKD		X.X ± 0.20	X.XX ± 0.05
			UNIT	MM	DATE	2021.02.11	APPD			

SINHO ELECTRONIC TECHNOLOGY CO.,LTD

