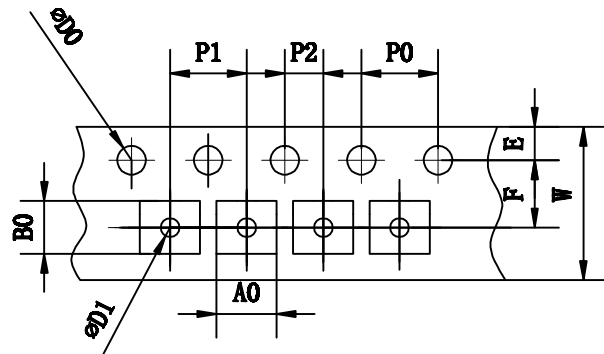
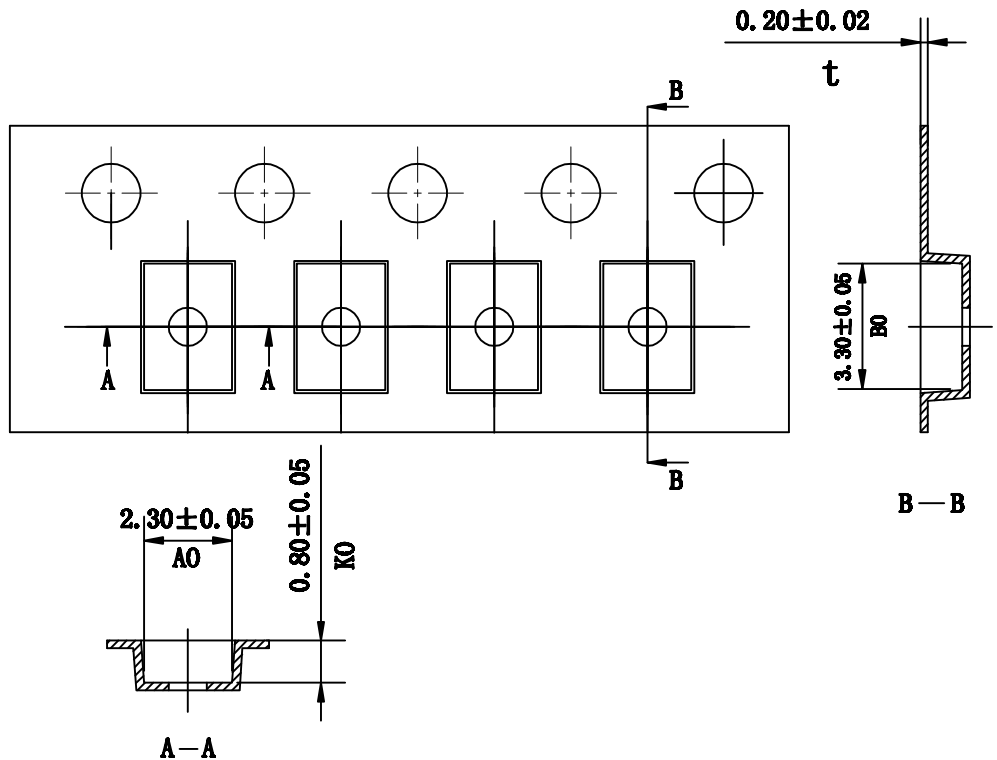


THE DIMENSIONS SHOWN ON THIS DESIGNED DRAWING ARE FOR ILLUSTRATIVE PURPOSE
 DIMENSIONS FOR ACTUAL CARRIER TAPE MAY SLIGHTLY DIFFERENT

REV.	MODIFICATION	DATE	DRAWING	CHECKED	APPROVED
1					
2					



Not Marked tolerance $\pm 0.2\text{mm}$

D_0 $\text{\textcircled{E}}$	D_1 $\text{\textcircled{E}}$	P_0 $\text{\textcircled{A}}$	P_2 $\text{\textcircled{A}}$	E $\text{\textcircled{A}}$						
$1.50^{+0.10}_{-0.00}$	$1.00^{+0.10}_{-0.0}$	$4.00_{\pm 0.10}$	$2.00_{\pm 0.05}$	$1.75_{\pm 0.10}$						
ITEM	W $\text{\textcircled{E}}$	A_0 $\text{\textcircled{A}}$	A_1 $\text{\textcircled{A}}$	B_0 $\text{\textcircled{A}}$	B_1 $\text{\textcircled{A}}$	K_0 $\text{\textcircled{C}}$	K_1 $\text{\textcircled{C}}$	P_1 $\text{\textcircled{A}}$	F $\text{\textcircled{A}}$	T $\text{\textcircled{E}}$
DIM	$8.00_{\pm 0.10}$	$2.30_{\pm 0.05}$		$3.30_{\pm 0.05}$		$0.80_{\pm 0.05}$	± 0.10	$4.00_{\pm 0.10}$	$3.50_{\pm 0.05}$	$0.20_{\pm 0.02}$
ALTERNATE										

- The Maximum cumulative tolerance is $\pm 0.2\text{mm}$ for 10 sprocket hole pitch
- Cambers do not exceed 1.0mm in 250mm length
- All dimension follow EIA-481-D series definition
- Material: ABS black conductive materials
- One 22" Reel=1000 Meters

RoHS Compliance	NAME.	CARRIER TAPE	PN	QFN0200X0300Q	SIZE	A4	DSGD		DIM TOL	Ang Tol	
	Mold Ref	2.30*3.30*0.80	Customer P/N		SHEET	1/1	PROJ		$X \pm 0.30$	$X.XX \pm 0.10$	$X \pm 5'$
	MATERIAL	ABS black conductive	SCALE	1:1	REV	A/0	CHKD		$X.X \pm 0.20$	$X.XX \pm 0.05$	$.XX \pm 1'$
			UNIT	MM	DATE		APPD				

