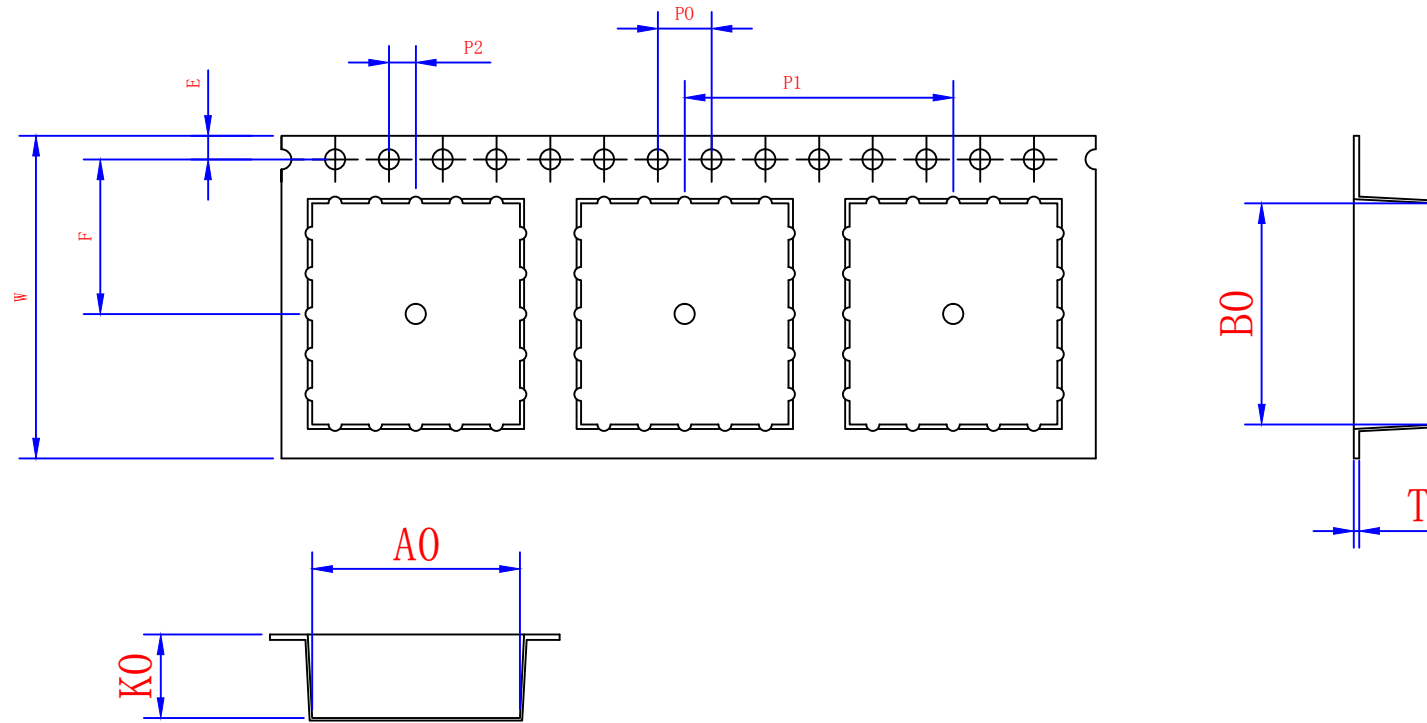


THE DIMENSIONS SHOWN ON THIS DESIGNED DRAWING ARE FOR ILLUSTRATIVE PURPOSE

DIMENSIONS FOR ACTUAL CARRIER TAPE MAY SLIGHTLY DIFFERENT

REV.	MODIFICATION	DATE	DRAWING	CHECKED	APPROVED
1					
2					



Not Marked tolerance $\pm 0.2\text{mm}$

D_0 $\text{\textcircled{E}}$	D_1 $\text{\textcircled{E}}$	P_0 $\text{\textcircled{A}}$	P_2 $\text{\textcircled{A}}$	E $\text{\textcircled{A}}$						
1.50 $\begin{smallmatrix} +0.10 \\ -0.00 \end{smallmatrix}$	1.50 $\begin{smallmatrix} +0.10 \\ -0.00 \end{smallmatrix}$	4.00 ± 0.10	2.00 ± 0.10	1.75 ± 0.10						
ITEM	W $\text{\textcircled{E}}$	A_0 $\text{\textcircled{A}}$	A_1 $\text{\textcircled{A}}$	B_0 $\text{\textcircled{A}}$	B_1 $\text{\textcircled{A}}$	K_0 $\text{\textcircled{C}}$	K_1 $\text{\textcircled{C}}$	P_1 $\text{\textcircled{A}}$	F $\text{\textcircled{A}}$	T $\text{\textcircled{E}}$
DIM	24.00 ± 0.30	15.45 ± 0.10	± 0.10	16.45 ± 0.10	± 0.10	6.20 ± 0.10	± 0.10	20.00 ± 0.10	11.50 ± 0.10	0.40 ± 0.05
ALTERNATE										

- 1.The Maximum cumulative tolerance is $\pm 0.2\text{mm}$ for 10 sprocket hole pitch
- 2.Cambers do not exceed 1.0mm in 250mm length
- 3.All dimension follow EIA-481-D series definition
- 4.Material: PS black
- 5.One 22" Reel=33 Meters

RoHS Compliance	NAME.	CARRIER TAPE	Mold Ref	RLG0072A	SIZE	A4	DSGD		DIM TOL	Ang Tol
	Mold Ref	15.45*16.45*6.20	Customer P/N		SHEET	1/1	PROJ		X ± 0.30	X.XX ± 0.10
	MATERIAL	PS BLACK	SCALE	1:1	REV	A/0	CHKD		X.X ± 0.20	XXX ± 0.05
			UNIT	MM	DATE	2022.7.28	APPD			

