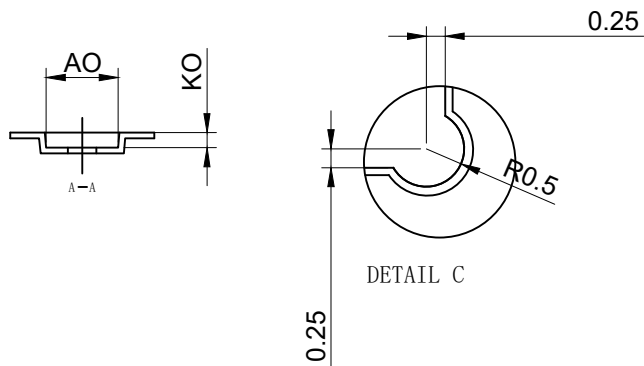
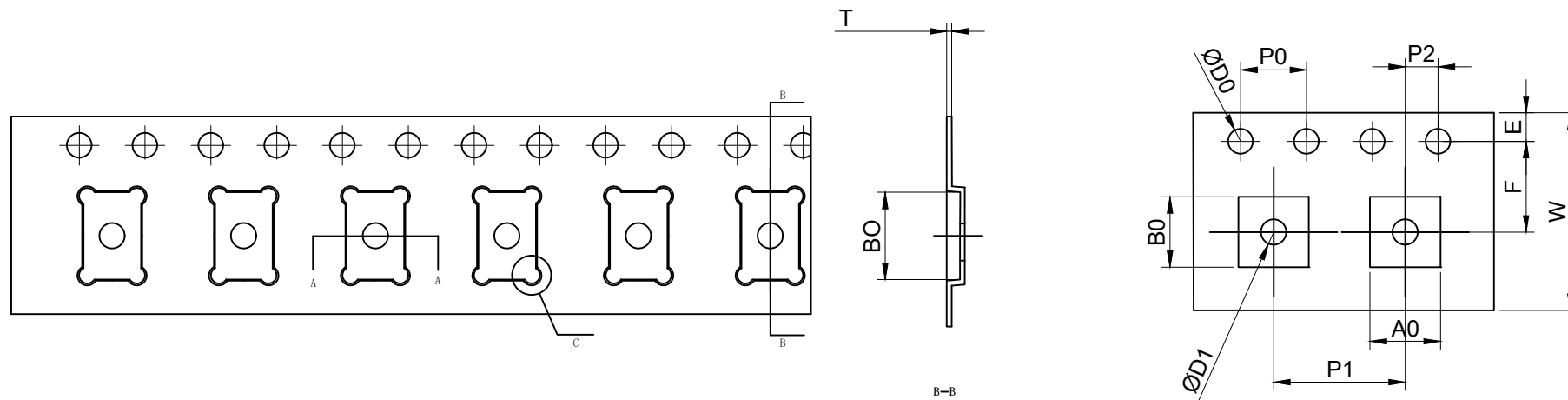


THE DIMENSIONS SHOWN ON THIS DESIGNED DRAWING ARE FOR ILLUSTRATIVE PURPOSE
 DIMENSIONS FOR ACTUAL CARRIER TAPE MAY SLIGHTLY DIFFERENT

REV.	MODIFICATION	DATE	DRAWING	CHECKED	APPROVED
1					
2					



Not Marked tolerance $\pm 0.2\text{mm}$

D_0 ⊕	D_1 ⊕	P_0 ⊕	P_2 ⊕	E ⊕						
$1.50^{+0.10}_{-0.00}$	$1.50^{+0.10}_{-0.00}$	$4.00_{\pm 0.10}$	$2.00_{\pm 0.10}$	$1.75_{\pm 0.10}$						
ITEM	W ⊕	A_0 ⊕	A_1 ⊕	B_0 ⊕	B_1 ⊕	K_0 ⊕	K_1 ⊕	P_1 ⊕	F ⊕	T ⊕
DIM	$12.00_{\pm 0.10}$	$3.50_{\pm 0.10}$		$5.30_{\pm 0.10}$		$1.16_{\pm 0.10}$	$_{\pm 0.10}$	$8.00_{\pm 0.10}$	$5.50_{\pm 0.10}$	$0.30_{\pm 0.05}$
ALTERNATE										

- The Maximum cumulative tolerance is $\pm 0.2\text{mm}$ for 10 sprocket hole pitch
- Cambers do not exceed 1.0mm in 250mm length
- All dimension follow EIA-481-D series definition
- Material: PS black
- One 22" Reel=133 Meters

RoHS Compliance	NAME.	CARRIER TAPE	PN	DFN 3.2X5.0X0.86	SIZE	A4	DSGD		DIM TOL	Ang Tol	
	Mold Ref	3.50*5.30*1.16	Customer P/N		SHEET	1/1	PROJ		$X \pm 0.30$	$X.XX \pm 0.10$	$X \pm 5'$
	MATERIAL	PS BLACK	SCALE	1:1	REV	A/0	CHKD		$X.X \pm 0.20$	$X.XXX \pm 0.05$	$.XX \pm 3'$
			UNIT	MM	DATE		APPD				$.XX \pm 1'$

