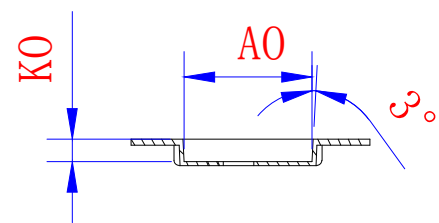
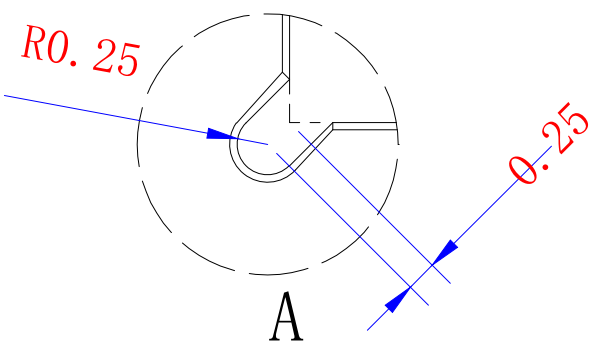
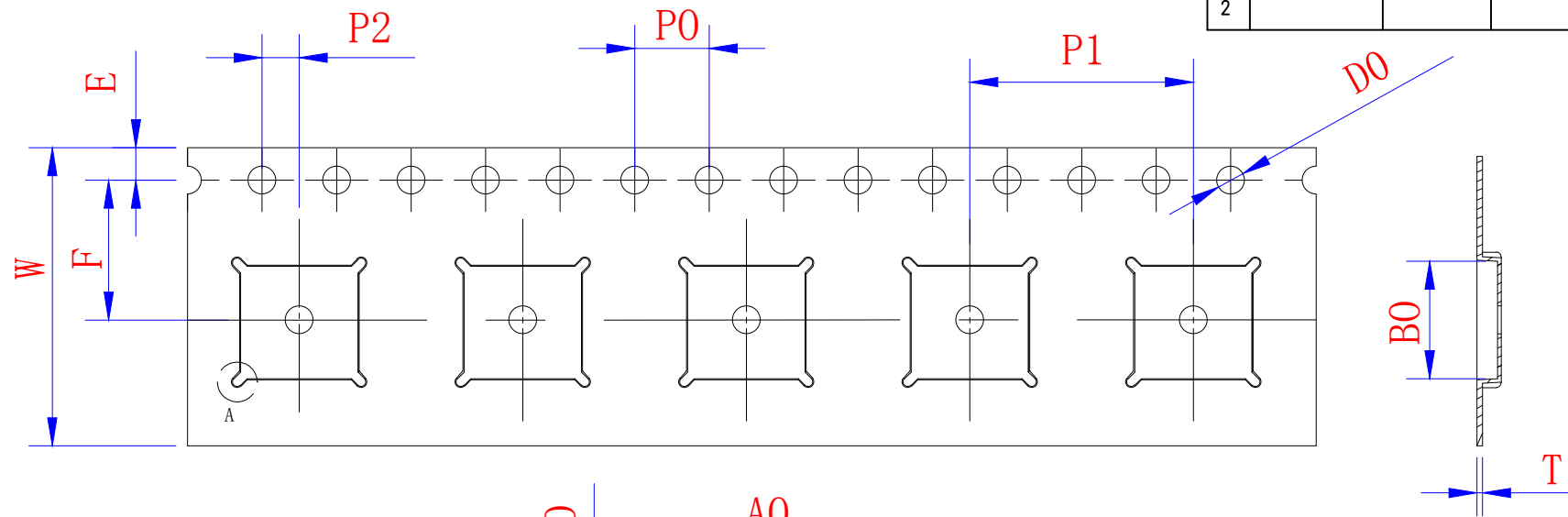


THE DIMENSIONS SHOWN ON THIS DESIGNED DRAWING ARE FOR ILLUSTRATIVE PURPOSE  
 DIMENSIONS FOR ACTUAL CARRIER TAPE MAY SLIGHTLY DIFFERENT

REV.	MODIFICATION	DATE	DRAWING	CHECKED	APPROVED
1					
2					



Not Marked tolerance  $\pm 0.2\text{mm}$

$D_0$ $\text{E}$	$D_1$ $\text{E}$	$P_0$ $\text{A}$	$P_2$ $\text{A}$	$E$ $\text{A}$						
1.50 $\begin{matrix} +0.10 \\ -0.00 \end{matrix}$	1.50 $\begin{matrix} +0.10 \\ -0.00 \end{matrix}$	4.00 $\pm 0.10$	2.00 $\pm 0.10$	1.75 $\pm 0.10$						
ITEM	W $\text{E}$	$A_0$ $\text{A}$	$A_1$ $\text{A}$	B $\text{A}$	$B_1$ $\text{A}$	$K_0$ $\text{C}$	$K_1$ $\text{C}$	$P_1$ $\text{A}$	F $\text{A}$	T $\text{E}$
DIM	16.00 $\pm 0.30$	6.30 $\pm 0.10$	$\pm 0.10$	6.30 $\pm 0.10$	$\pm 0.10$	1.10 $\pm 0.10$	$\pm 0.10$	12.00 $\pm 0.10$	7.50 $\pm 0.10$	0.30 $\pm 0.05$
ALTERNATE										

- The Maximum cumulative tolerance is  $\pm 0.2\text{mm}$  for 10 sprocket hole pitch
- Cambers do not exceed 1.0mm in 250mm length
- All dimension follow EIA-481-D series definition
- Material: PS black
- One 22" Reel=159 Meters

RoHS Compliance	NAME.	CARRIER TAPE	Part Number	QFN0600X0600A	SIZE	A4	DSGD		DIM TOL	Ang Tol
	Mold Ref	6.30*6.30*1.10	Customer P/N		SHEET	1/1	PROJ		X $\pm 0.30$	X.XX $\pm 0.10$
	MATERIAL	PS BLACK	SCALE	1:1	REV	A/0	CHKD		X.X $\pm 0.20$	X.XX $\pm 0.05$
			UNIT	MM	DATE	2021.6.8	APPD			

