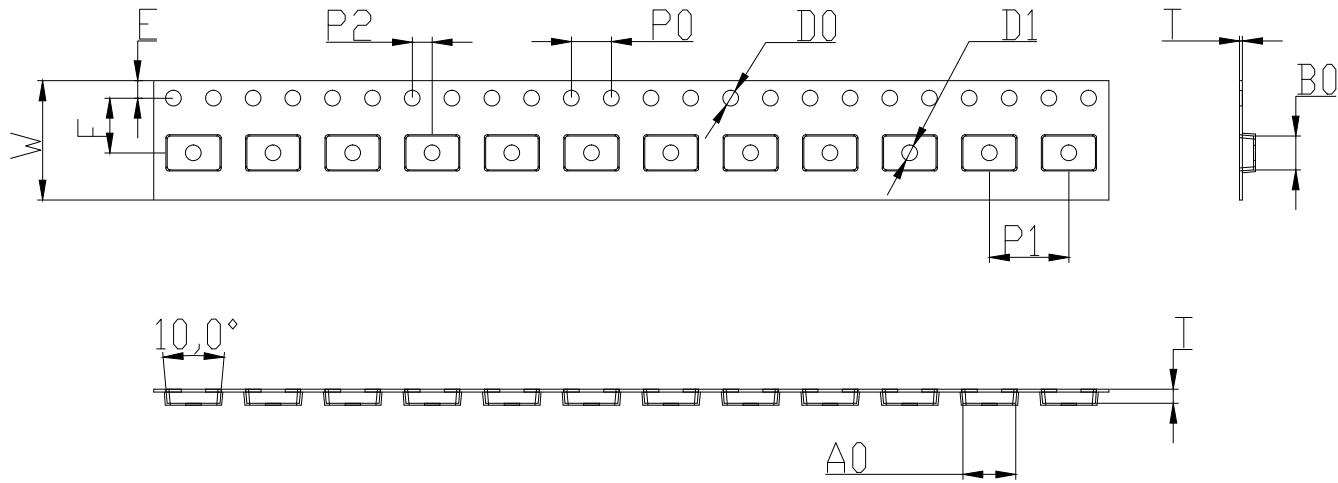


RoHS Compliance

REV.	MODIFICATION	DATE	DRAWING	CHECKED	APPROVED
1					
2					



Not Marked tolerance ±0.2mm

D ₀ ⓑ	D ₁ ⓑ	P ₀ ⓐ	P ₂ ⓐ	E ⓐ
1.50 ^{+0.10} _{-0.00}	1.50 ^{+0.10} _{-0.00}	4.00 ±0.10	2.00 ±0.10	1.75 ±0.10

1. The Maximum cumulative tolerance is ±0.2mm for 10 sprocket hole pitch
2. Cambers do not exceed 1.0mm in 250mm length
3. All dimension follow EIA-481-2A Series defination
4. Material: PS black
5. One 22" Reel=133 Meters

ITEM	W ⓑ	A ₀ ⓐ	A ₁ ⓐ	B ₀ ⓐ	B ₁ ⓐ	K ₀ ⓐ	K ₁ ⓐ	P ₁ ⓐ	F ⓐ	T ⓑ
DIM	12.00 ±0.10	5.30 ±0.10	±0.10	3.40 ±0.10	±0.10	1.40 ±0.10	±0.10	8.00 ±0.10	5.50 ±0.10	0.30 ±0.05
ALTERNATE										

SINHO ELECTRONIC TECHNOLOGY CO.,LTD	NAME.	CARRIER TAPE	Mold Ref	SOP8-Mini	SIZE	A4	DSGD		DIM TOL	Ang Tol
	Mold Ref	5.30×3.40×1.40	Customer P/N		SHEET	1/1	PROJ		X ±0.30	X.XX ±0.10
	MATERIAL	PS BLACK	SCALE	1:1	REV	A/0	CHKD		X.X ±0.20	X.XXX ±0.05
			UNIT	MM	DATE	2017.11.18	APPD			