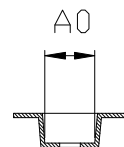
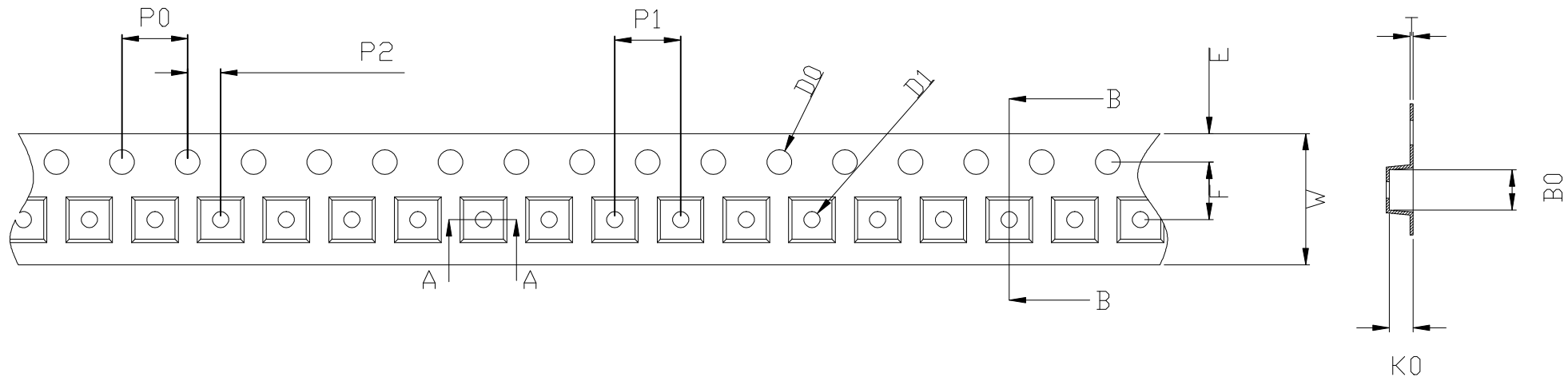


THE DIMENSIONS SHOWN ON THIS DESIGNED DRAWING ARE FOR ILLUSTRATIVE PURPOSE

DIMENSIONS FOR ACTUAL CARRIER TAPE MAY SLIGHTLY DIFFERENT

REV.	MODIFICATION	DATE	DRAWING	CHECKED	APPROVED
1					
2					



SECTION A-A

SECTION B-B

Not Marked tolerance $\pm 0.2\text{mm}$

- The Maximum cumulative tolerance is $\pm 0.2\text{mm}$ for 10 sprocket hole pitch
- Cambers do not exceed 1.0mm in 250mm length
- All dimension follow EIA-481-D series definition
- Material: PC+S black conductive
- One 22" Reel=1,000 Meters

ITEM	W $\text{\textcircled{E}}$	A_0 $\text{\textcircled{A}}$	A_1 $\text{\textcircled{A}}$	B_0 $\text{\textcircled{A}}$	B_1 $\text{\textcircled{A}}$	K_0 $\text{\textcircled{C}}$	K_1 $\text{\textcircled{C}}$	P_1 $\text{\textcircled{A}}$	F $\text{\textcircled{A}}$	T $\text{\textcircled{E}}$
DIM	8.00 ± 0.10	3.26 ± 0.10	± 0.10	3.30 ± 0.10	± 0.10	1.40 ± 0.10	± 0.10	4.00 ± 0.10	3.50 ± 0.05	0.20 ± 0.05
ALTERNATE										

RoHS Compliance	NAME.	CARRIER TAPE	Part Number	SOT25	SIZE	A4	DSGD		DIM TOL	Ang Tol
	Mold Ref	3.26*3.30*1.40	Customer P/N		SHEET	1/1	PROJ		X ± 0.30	X.XX ± 0.10
	MATERIAL	PC+S black conductive	SCALE	1:1	REV	A/0	CHKD		X.X ± 0.20	X.XX ± 0.05
			UNIT	MM	DATE		APPD			

