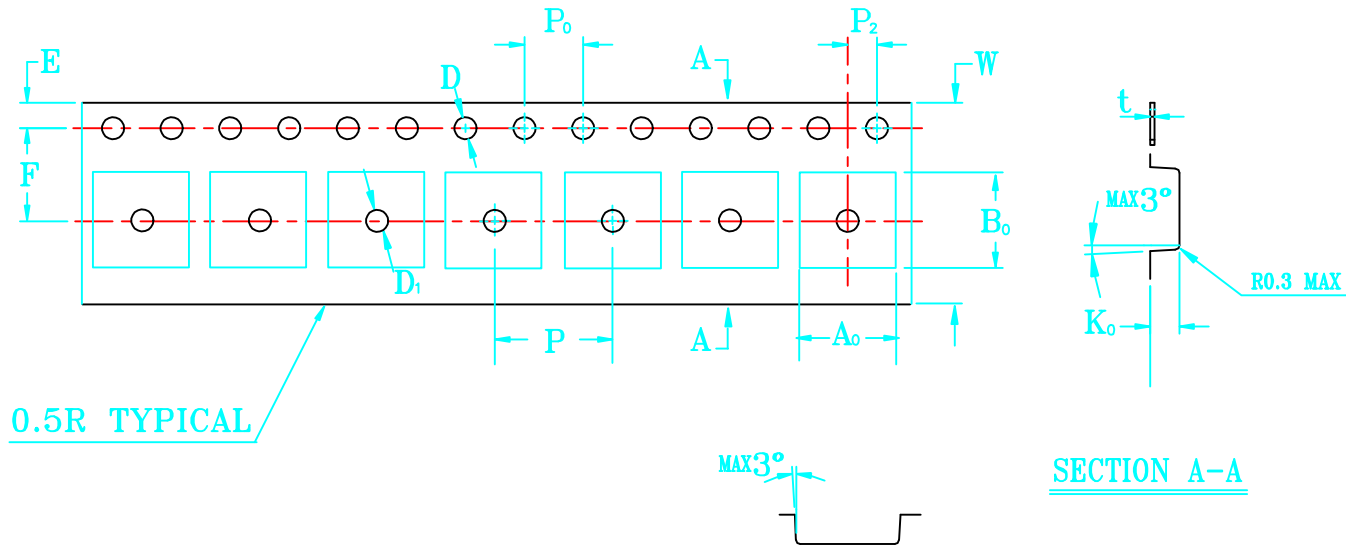


THE DIMENSIONS SHOWN ON THIS DESIGNED DRAWING ARE FOR ILLUSTRATIVE PURPOSE

DIMENSIONS FOR ACTUAL CARRIER TAPE MAY SLIGHTLY DIFFERENT

REV.	MODIFICATION	DATE	DRAWING	CHECKED	APPROVED
1					
2					



SCALE: 2 : 1

Not Marked tolerance $\pm 0.2\text{mm}$

- The Maximum cumulative tolerance is $\pm 0.2\text{mm}$ for 10 sprocket hole pitch
- Cambers do not exceed 1.0mm in 250mm length
- All dimension follow EIA-481-D series definition
- Material: PS black
- One 22" Reel=400 Meters

ITEM	W $\text{\textcircled{E}}$	A ₀ $\text{\textcircled{A}}$	A ₁ $\text{\textcircled{A}}$	B ₀ $\text{\textcircled{A}}$	B ₁ $\text{\textcircled{A}}$	K ₀ $\text{\textcircled{C}}$	K ₁ $\text{\textcircled{C}}$	P ₁ $\text{\textcircled{A}}$	F $\text{\textcircled{A}}$	T $\text{\textcircled{E}}$
D ₀ $\text{\textcircled{E}}$	1.50 $\begin{smallmatrix} +0.10 \\ -0.00 \end{smallmatrix}$	D ₁ $\text{\textcircled{E}}$	1.50 $\begin{smallmatrix} +0.10 \\ -0.00 \end{smallmatrix}$	P ₀ $\text{\textcircled{A}}$	4.00 ± 0.10	P ₂ $\text{\textcircled{A}}$	2.00 ± 0.10	E $\text{\textcircled{A}}$	1.75 ± 0.10	
DIM	16.00 ± 0.30	7.00 ± 0.10	± 0.10	7.50 ± 0.10	± 0.10	2.00 ± 0.10	± 0.10	8.00 ± 0.10	7.50 ± 0.10	0.30 ± 0.05
ALTERNATE										

RoHS Compliance	NAME.	CARRIER TAPE	PN	SOT-223-1	SIZE	A4	DSGD		DIM TOL	Ang Tol	
	Mold Ref	7.00*7.50*2.00	Customer P/N		SHEET	1/1	PROJ		X ± 0.30	X.XX ± 0.10	X $\pm 5'$
	MATERIAL	PS BLACK	SCALE	1:1	REV	A/0	CHKD		X.X ± 0.20	X.XX ± 0.05	.XX $\pm 3'$
			UNIT	MM	DATE	2019.3.8	APPD				