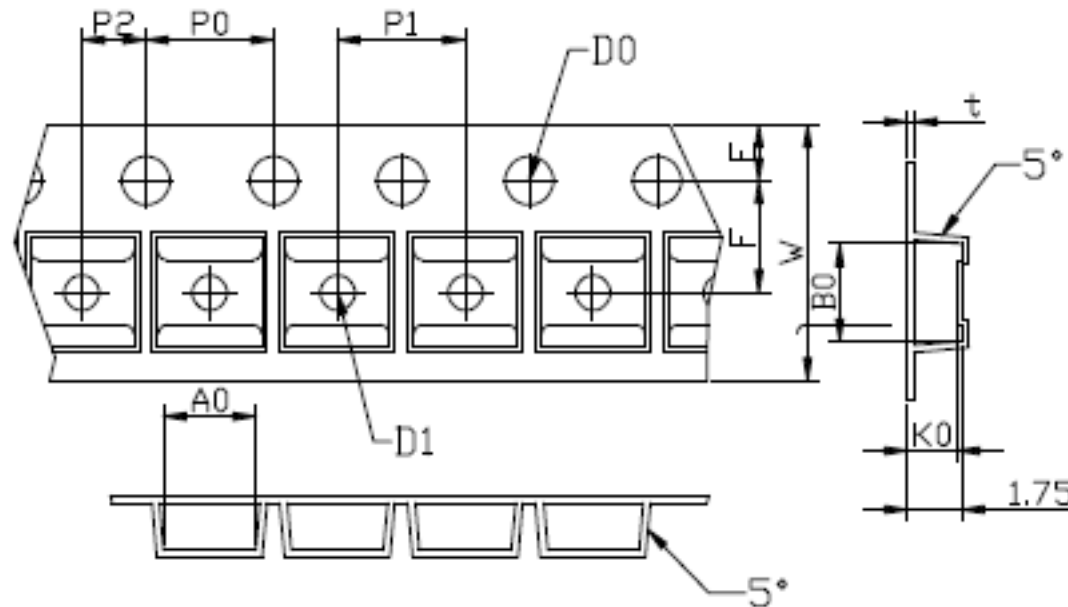


THE DIMENSIONS SHOWN ON THIS DESIGNED DRAWING ARE FOR ILLUSTRATIVE PURPOSE

DIMENSIONS FOR ACTUAL CARRIER TAPE MAY SLIGHTLY DIFFERENT

REV.	MODIFICATION	DATE	DRAWING	CHECKED	APPROVED
1					
2					



Not Marked tolerance ±0.2mm

D_0 Ⓣ	D_1 Ⓣ	P_0 Ⓣ	P_1 Ⓣ	E Ⓣ						
1.55 ±0.05	below 1.20	4.00 ±0.10	2.00 ±0.05	1.75 ±0.10						
ITEM	W Ⓣ	A_0 Ⓣ	A_1 Ⓣ	B_0 Ⓣ	B_1 Ⓣ	K_0 Ⓣ	K_1 Ⓣ	P_1 Ⓣ	F Ⓣ	T Ⓣ
DIM	8.00 ±0.10	3.30 ±0.10	±0.10	3.25 ±0.10	±0.10	1.75 ±0.10	±0.10	4.00 ±0.10	3.50 ±0.05	0.22 ±0.05
ALTERNATE										

- The Maximum cumulative tolerance is ±0.2mm for 10 sprocket hole pitch
- Cambers do not exceed 1.0mm in 250mm length
- All dimension follow EIA-481-D series definition
- Material: PC+S black conductive
- One 22" Reel=800 Meters

RoHS Compliance	NAME.	CARRIER TAPE	PN	SN3015-2	SIZE	A4	DSGD		DIM TOL	Ang Tol
	Mold Ref	3.30*3.25*1.75	Customer P/N		SHEET	1/1	PROJ		X ±0.30 X.XX ±0.10 X ±5'	X ±3'
	MATERIAL	PC+S black conductive	SCALE	1:1	REV	A/0	CHKD		X.X ±0.20X.XXX ±0.05 .XX ±1'	
			UNIT	MM	DATE		APPD			

