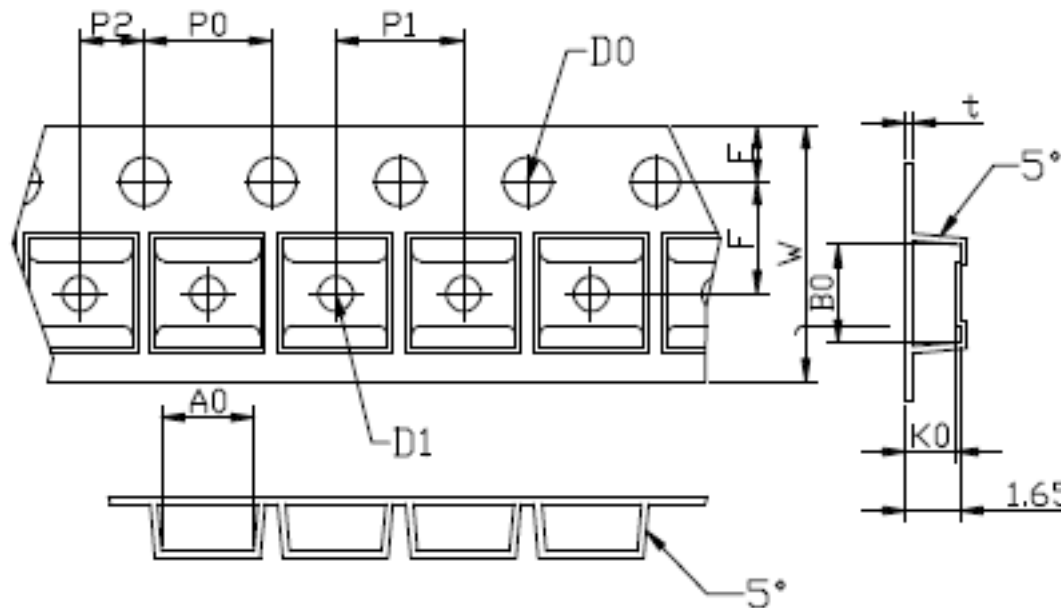


THE DIMENSIONS SHOWN ON THIS DESIGNED DRAWING ARE FOR ILLUSTRATIVE PURPOSE

DIMENSIONS FOR ACTUAL CARRIER TAPE MAY SLIGHTLY DIFFERENT

REV.	MODIFICATION	DATE	DRAWING	CHECKED	APPROVED
1					
2					



Not Marked tolerance  $\pm 0.2\text{mm}$

$D_0$ $\text{\textcircled{E}}$	$D_1$ $\text{\textcircled{E}}$	$P_0$ $\text{\textcircled{A}}$	$P_1$ $\text{\textcircled{A}}$	$E$ $\text{\textcircled{A}}$						
1.55 $\pm 0.05$	below 1.20	4.00 $\pm 0.10$	2.00 $\pm 0.05$	1.75 $\pm 0.10$						
ITEM	$W$ $\text{\textcircled{E}}$	$A_0$ $\text{\textcircled{A}}$	$A_1$ $\text{\textcircled{A}}$	$B_0$ $\text{\textcircled{A}}$	$B_1$ $\text{\textcircled{A}}$	$K_0$ $\text{\textcircled{C}}$	$K_1$ $\text{\textcircled{C}}$	$P_1$ $\text{\textcircled{A}}$	$F$ $\text{\textcircled{A}}$	$T$ $\text{\textcircled{E}}$
DIM	8.00 $\pm 0.10$	3.30 $\pm 0.10$	$\pm 0.10$	3.25 $\pm 0.10$	$\pm 0.10$	1.55 $\pm 0.10$	$\pm 0.10$	4.00 $\pm 0.10$	3.50 $\pm 0.05$	0.22 $\pm 0.05$
ALTERNATE										

- 1.The Maximum cumulative tolerance is  $\pm 0.2\text{mm}$  for 10 sprocket hole pitch
- 2.Cambers do not exceed 1.0mm in 250mm length
- 3.All dimension follow EIA-481-D series definition
- 4.Material: PC+S black conductive
- 5.One 22" Reel=800 Meters

RoHS Compliance	NAME.	CARRIER TAPE	PN	SN3015	SIZE	A4	DSGD		DIM TOL	Ang Tol	
	Mold Ref	3.30*3.25*1.55	Customer P/N		SHEET	1/1	PROJ		X $\pm 0.30$	X.XX $\pm 0.10$	X $\pm 5^\circ$
	MATERIAL	PC+S black conductive	SCALE	1:1	REV	A/0	CHKD		X.X $\pm 0.20$	X.XX $\pm 0.05$	.XX $\pm 3^\circ$
			UNIT	MM	DATE		APPD				