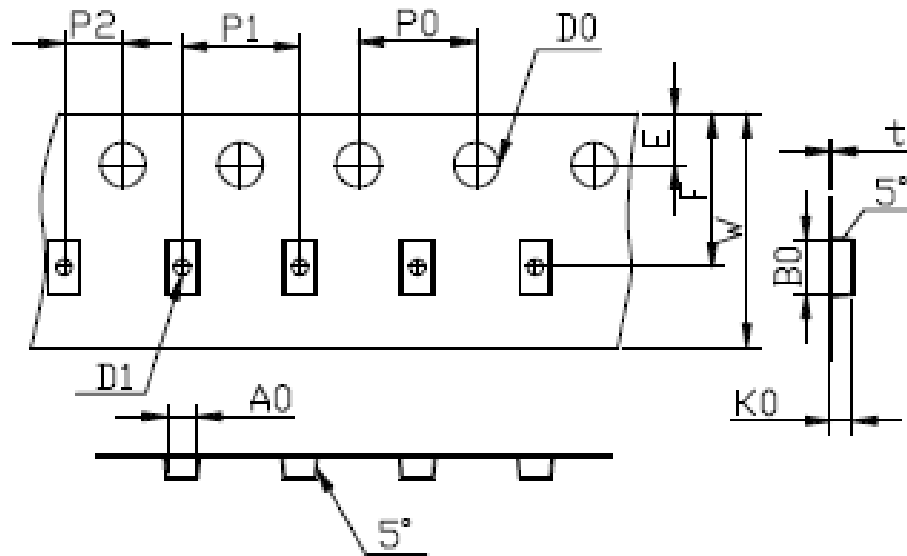


THE DIMENSIONS SHOWN ON THIS DESIGNED DRAWING ARE FOR ILLUSTRATIVE PURPOSE

DIMENSIONS FOR ACTUAL CARRIER TAPE MAY SLIGHTLY DIFFERENT

REV.	MODIFICATION	DATE	DRAWING	CHECKED	APPROVED
1					
2					



Not Marked tolerance $\pm 0.2\text{mm}$

D_0 E	D_1 E	P_0 A	P_2 A	E A						
1.55 ± 0.05	below 1.20	4.00 ± 0.10	2.00 ± 0.10	1.75 ± 0.10						
ITEM	W E	A_0 A	A_1 A	B_0 A	B_1 A	K_0 C	K_1 C	P_1 A	F A	T E
DIM	8.00 ± 0.10	0.90 ± 0.10	± 0.10	1.75 ± 0.10	± 0.10	0.85 ± 0.10	± 0.10	4.00 ± 0.10	3.50 ± 0.05	0.22 ± 0.05
ALTERNATE										

- 1.The Maximum cumulative tolerance is $\pm 0.2\text{mm}$ for 10 sprocket hole pitch
- 2.Cambers do not exceed 1.0mm in 250mm length
- 3.All dimension follow EIA-481-D series definition
- 4.Material: PC+S black conductive
- 5.One 22" Reel=1000 Meters

RoHS Compliance	NAME.	CARRIER TAPE	Part Number	0603-04	SIZE	A4	DSGD		DIM TOL	Ang Tol	
	Mold Ref	0.90*1.75*0.85	Customer P/N		SHEET	1/1	PROJ		$X \pm 0.30$	$X.XX \pm 0.10$	$X \pm 5'$
	MATERIAL	PC+S black conductive	SCALE	1:1	REV	A/0	CHKD		$X.X \pm 0.20$	$.XXX \pm 0.05$	$.XX \pm 3'$
			UNIT	MM	DATE		APPD				

