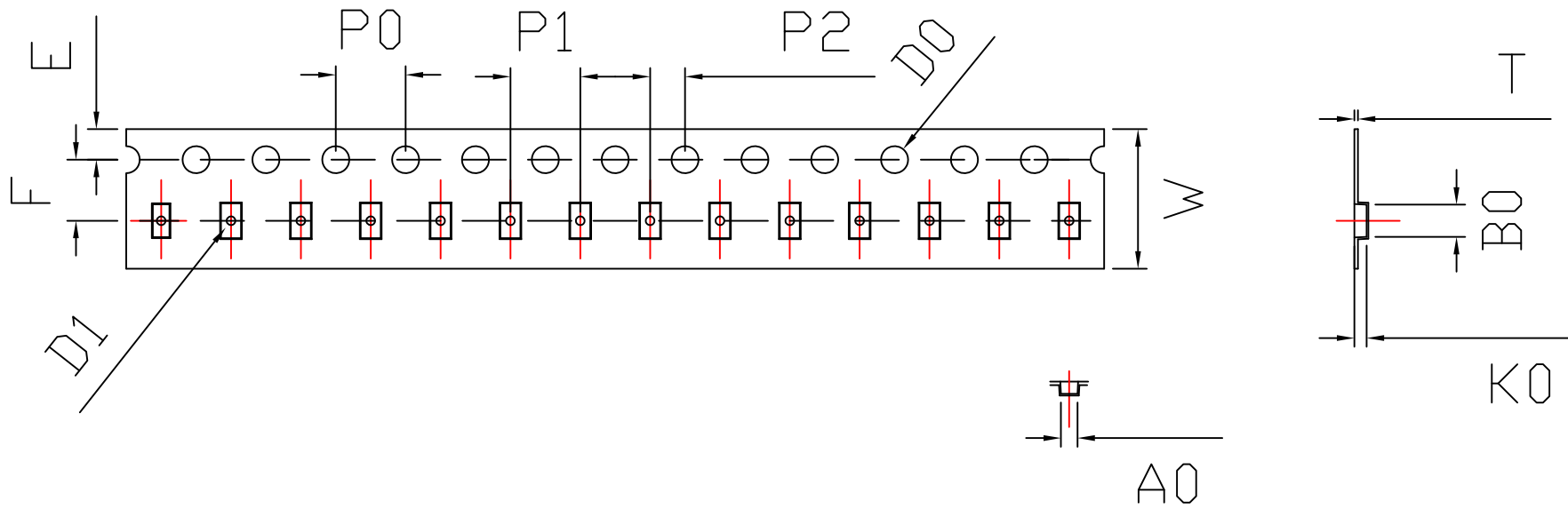


THE DIMENSIONS SHOWN ON THIS DESIGNED DRAWING ARE FOR ILLUSTRATIVE PURPOSE

DIMENSIONS FOR ACTUAL CARRIER TAPE MAY SLIGHTLY DIFFERENT

REV.	MODIFICATION	DATE	DRAWING	CHECKED	APPROVED
1					
2					



Not Marked tolerance $\pm 0.2\text{mm}$

D_0 Ⓜ	D_1 Ⓜ	P_0 Ⓜ	P_2 Ⓜ	E Ⓜ						
$1.50^{+0.10}_{-0.00}$	$0.60_{\pm 0.10}$	$4.00_{\pm 0.10}$	$2.00_{\pm 0.05}$	$1.75_{\pm 0.10}$						
ITEM	W Ⓜ	A_0 Ⓜ	A_1 Ⓜ	B_0 Ⓜ	B_1 Ⓜ	K_0 Ⓜ	K_1 Ⓜ	P_1 Ⓜ	F Ⓜ	T Ⓜ
DIM	$8.00_{\pm 0.10}$	$0.95_{\pm 0.05}$		$1.85_{\pm 0.05}$		$0.75_{\pm 0.05}$	± 0.10	$4.00_{\pm 0.10}$	$3.50_{\pm 0.05}$	$0.20_{\pm 0.05}$
ALTERNATE										

- 1.The Maximum cumulative tolerance is $\pm 0.2\text{mm}$ for 10 sprocket hole pitch
- 2.Cambers do not exceed 1.0mm in 250mm length
- 3.All dimension follow EIA-481-D series definition
- 4.Material: ABS black conductive materials
- 5.One 22" Reel=1,010 Meters

RoHS Compliance	NAME.	CARRIER TAPE	PN	0603	SIZE	A4	DSGD		DIM TOL	Ang Tol	
	Mold Ref	0.95*1.85*0.75	Customer P/N		SHEET	1/1	PROJ		$X \pm 0.30$	$X.XX \pm 0.10$	$X^X \pm 5'$
	MATERIAL	ABS black conductive	SCALE	1:1	REV	A/0	CHKD		$X.X \pm 0.20$	$X.XXX \pm 0.05$	$.XX \pm 3'$
			UNIT	MM	DATE		APPD				Ⓜ Ⓜ