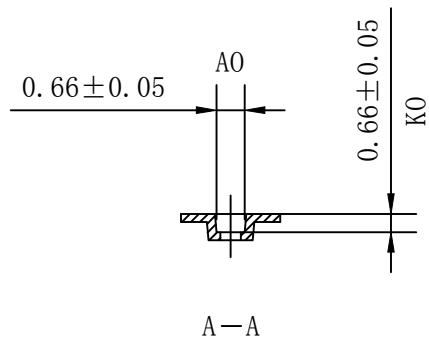
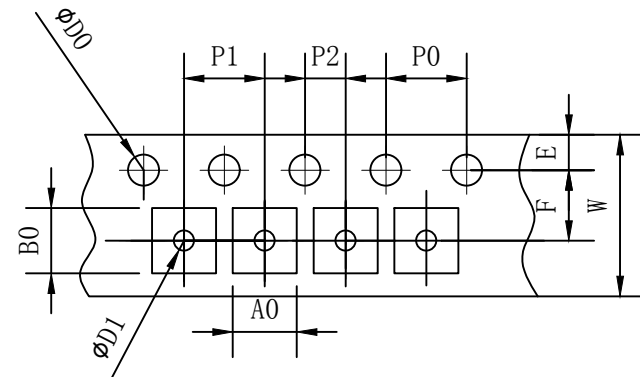
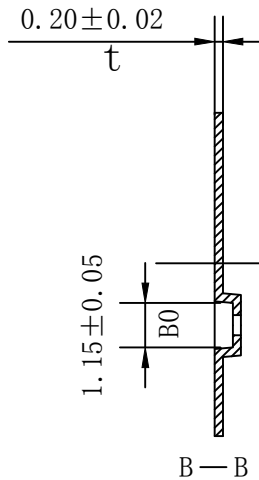
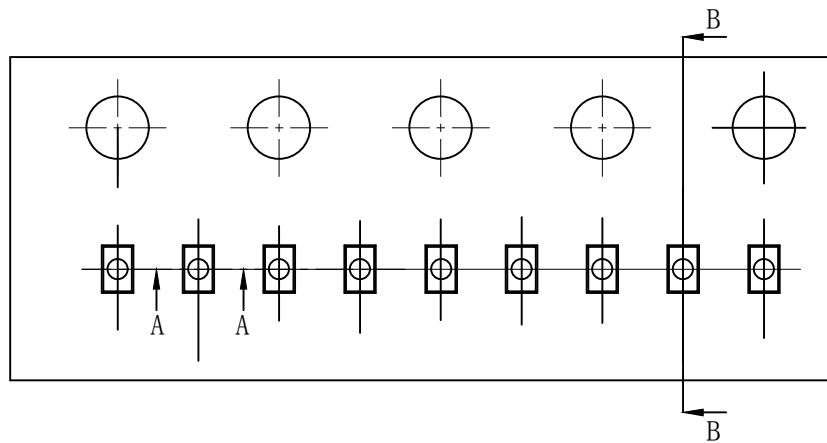


THE DIMENSIONS SHOWN ON THIS DESIGNED DRAWING ARE FOR ILLUSTRATIVE PURPOSE  
 DIMENSIONS FOR ACTUAL CARRIER TAPE MAY SLIGHTLY DIFFERENT

REV.	MODIFICATION	DATE	DRAWING	CHECKED	APPROVED
1					
2					



Not Marked tolerance  $\pm 0.2\text{mm}$

$D_0$ $\text{\textcircled{E}}$	$D_1$ $\text{\textcircled{E}}$	$P_0$ $\text{\textcircled{A}}$	$P_2$ $\text{\textcircled{A}}$	$E$ $\text{\textcircled{A}}$						
1.50 $\pm 0.10$	0.40 $\pm 0.10$	4.00 $\pm 0.10$	2.00 $\pm 0.05$	1.75 $\pm 0.10$						
ITEM	$W$ $\text{\textcircled{E}}$	$A_0$ $\text{\textcircled{A}}$	$A_1$ $\text{\textcircled{A}}$	$B_0$ $\text{\textcircled{A}}$	$B_1$ $\text{\textcircled{A}}$	$K_0$ $\text{\textcircled{C}}$	$K_1$ $\text{\textcircled{C}}$	$P_1$ $\text{\textcircled{A}}$	$F$ $\text{\textcircled{A}}$	$T$ $\text{\textcircled{E}}$
DIM	8.00 $\pm 0.10$	0.66 $\pm 0.05$		1.15 $\pm 0.05$		0.66 $\pm 0.05$		2.00 $\pm 0.10$	3.50 $\pm 0.05$	0.20 $\pm 0.02$
ALTERNATE										

- The Maximum cumulative tolerance is  $\pm 0.2\text{mm}$  for 10 sprocket hole pitch
- Cambers do not exceed 1.0mm in 250mm length
- All dimension follow EIA-481-D series definition
- Material: PC black conductive
- One 22" Reel=500 Meters

RoHS Compliance	NAME.	CARRIER TAPE	Part Number	0402	SIZE	A4	DSGD		DIM TOL	Ang Tol
	Mold Ref	0.66x1.15x0.66	Customer P/N		SHEET	1/1	PROJ		X $\pm 0.30$ X.XX $\pm 0.10$ X $\pm 5'$	.X $\pm 3'$
	MATERIAL	PC black conductive	SCALE	1:1	REV	A/0	CHKD		X.X $\pm 0.20$ X.XXX $\pm 0.05$ .XX $\pm 1'$	
			UNIT	MM	DATE	2022-08-09	APPD			

