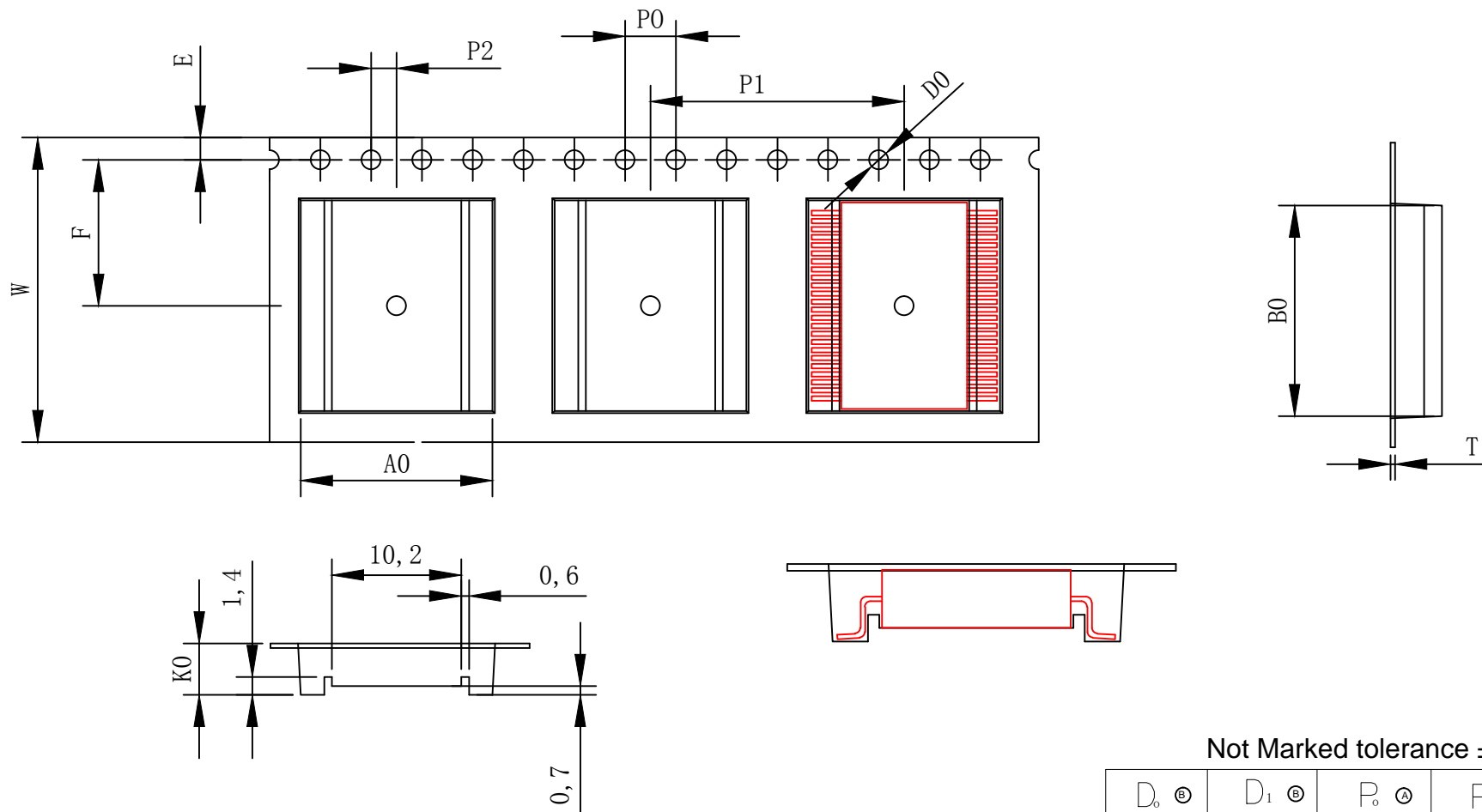


THE DIMENSIONS SHOWN ON THIS DESIGNED DRAWING ARE FOR ILLUSTRATIVE PURPOSE  
 DIMENSIONS FOR ACTUAL CARRIER TAPE MAY SLIGHTLY DIFFERENT

REV.	MODIFICATION	DATE	DRAWING	CHECKED	APPROVED
1					
2					



Not Marked tolerance  $\pm 0.2\text{mm}$

$D_0 \text{ } \textcircled{E}$	$D_1 \text{ } \textcircled{E}$	$P_0 \text{ } \textcircled{A}$	$P_2 \text{ } \textcircled{A}$	$E \text{ } \textcircled{A}$						
$1.50^{+0.10}_{-0.00}$	$1.50^{+0.10}_{-0.00}$	$4.00 \pm 0.10$	$2.00 \pm 0.10$	$1.75 \pm 0.10$						
ITEM	$W \text{ } \textcircled{E}$	$A_0 \text{ } \textcircled{A}$	$A_1 \text{ } \textcircled{A}$	$B_0 \text{ } \textcircled{A}$	$B_1 \text{ } \textcircled{A}$	$K_0 \text{ } \textcircled{C}$	$K_1 \text{ } \textcircled{C}$	$P_1 \text{ } \textcircled{A}$	$F \text{ } \textcircled{A}$	$T \text{ } \textcircled{E}$
DIM	$24.00 \pm 0.30$	$15.10 \pm 0.10$	$\pm 0.10$	$16.60 \pm 0.10$	$\pm 0.10$	$4.05 \pm 0.10$	$\pm 0.10$	$20.00 \pm 0.10$	$11.50 \pm 0.10$	$0.35 \pm 0.05$
ALTERNATE										

- The Maximum cumulative tolerance is  $\pm 0.2\text{mm}$  for 10 sprocket hole pitch
- Cambers do not exceed 1.0mm in 250mm length
- All dimension follow EIA-481-D series definition
- Material: PS black
- One 22" Reel=50 Meters

RoHS Compliance	NAME.	CARRIER TAPE	Part Number		SIZE	A4	DSGD		DIM TOL	Ang Tol
	Mold Ref	15.10x16.60x4.05	Customer P/N		SHEET	1/1	PROJ		$X \pm 0.30$	$X.XX \pm 0.10$
	MATERIAL	PS BLACK	SCALE	1:1	REV	A/0	CHKD		$X.X \pm 0.20$	$X.XXX \pm 0.05$
			UNIT	MM	DATE	2022-07-15	APPD			

