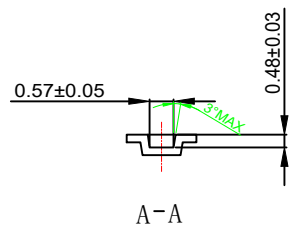
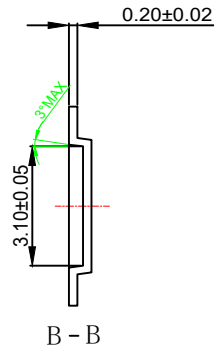
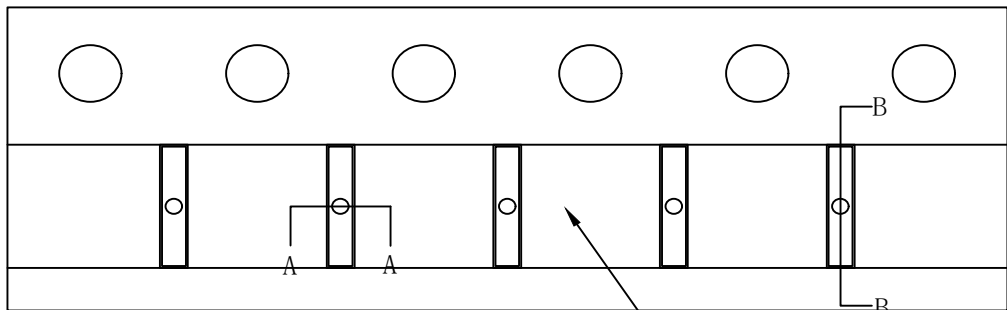
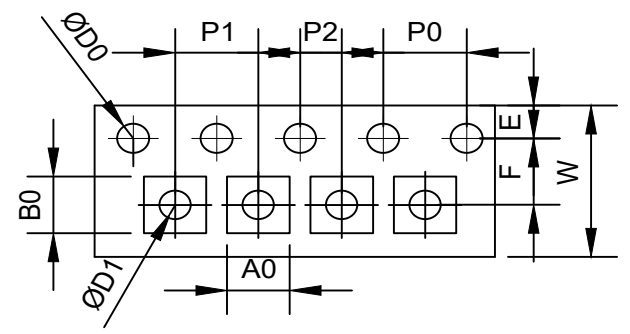


THE DIMENSIONS SHOWN ON THIS DESIGNED DRAWING ARE FOR ILLUSTRATIVE PURPOSE
 DIMENSIONS FOR ACTUAL CARRIER TAPE MAY SLIGHTLY DIFFERENT

REV.	MODIFICATION	DATE	DRAWING	CHECKED	APPROVED
1					
2					



0.05 RAISED CROSS-BAR±0.03



Not Marked tolerance ±0.2mm

D_0 ⊕	D_1 ⊕	P_0 ⊕	P_2 ⊕	E ⊕						
1.50 +0.1/-0	0.40 ±0.10	4.00 ±0.10	2.00 ±0.05	1.75 ±0.10						
K_0 ⊙	K_1 ⊙	P_1 ⊕	F ⊕	T ⊕						
0.48 ±0.03		4.00 ±0.10	3.50 ±0.05	0.20 ±0.02						
ITEM	W ⊕	A_0 ⊕	A_1 ⊕	B_0 ⊕	B_1 ⊕	K_0 ⊙	K_1 ⊙	P_1 ⊕	F ⊕	T ⊕
DIM	8.00 ±0.10	0.57 ±0.05		3.10 ±0.05		0.48 ±0.03		4.00 ±0.10	3.50 ±0.05	0.20 ±0.02
ALTERNATE										

- The Maximum cumulative tolerance is ±0.2mm for 10 sprocket hole pitch
- Cambers do not exceed 1.0mm in 250mm length
- All dimension follow EIA-481-D series definition
- Material: PC black conductive
- One 22" Reel=500 Meters

RoHS Compliance	NAME.	CARRIER TAPE	Part Number		SIZE	A4	DSGD		DIM TOL	Ang Tol
	Mold Ref	0.57×3.10×0.48	Customer P/N		SHEET	1/1	PROJ		X ±0.30 X.XX ±0.10 X ±5'	X ±3' .XX ±1'
	MATERIAL	PC black conductive	SCALE	1:1	REV	A/0	CHKD		X.X ±0.20X.XXX ±0.05 .XX ±1'	
	SINHO ELECTRONIC TECHNOLOGY CO.,LTD		UNIT	MM	DATE	2024-06-05	APPD			

